

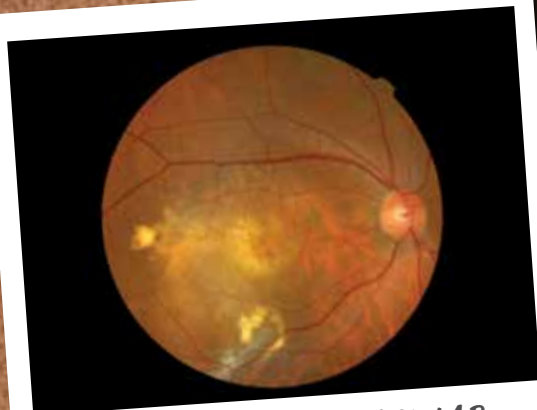
Every Photo Tells a Story...

Dr Yeo Kim Teck
Apple Eye Centre
Senior Consultant Ophthalmologist

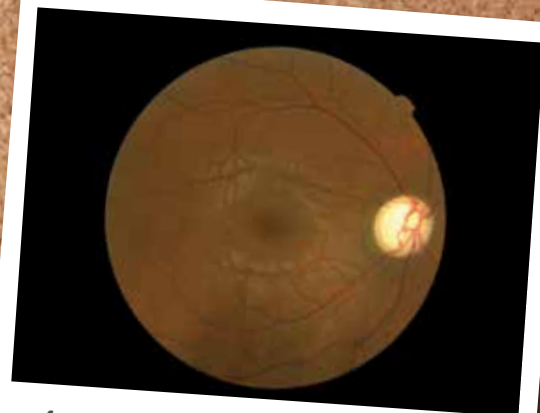
THE RETINAL PHOTOGRAPHY PROGRAMME IN DIABETES

The diabetic retinal photography screening programme kicked off in 1991. The raison d'être for the programme was the detection of diabetic eye disease (retinopathy). Some collateral benefits include the detection of a myriad of other eye conditions such as cataracts, age-related macular degeneration, retinal detachment, epiretinal membrane and vein occlusions. Even rare retinal conditions can make a cameo appearance in the humble retinal photograph. Yes, every photograph tells more than a story. We will revisit these conditions in greater detail in the next edition of Eye Site.

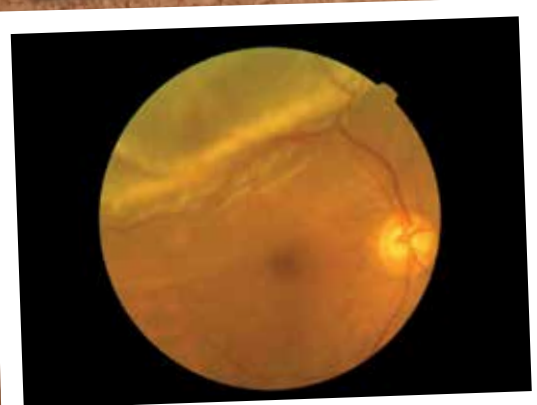
Do note that while a retinal photograph can show up eye diseases that affect the central portion of the eye, lesions in the peripheral of the eyes will only show up in a full eye examination. The retinal photograph is not a substitute for a full eye examination and is more of a screening tool.



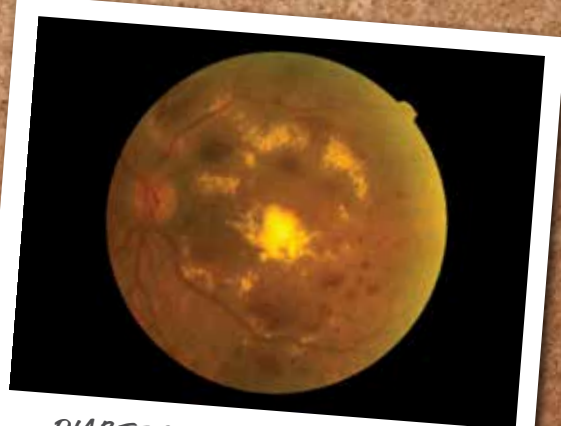
AGE-RELATED MACULAR
DEGENERATION



ADVANCE CHRONIC GLAUCOMA



RETINAL DETACHMENT



DIABETIC MACULAR EDEMA OR
DIABETIC MACULOPATHY